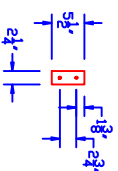
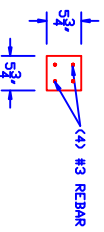


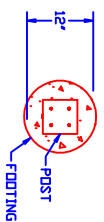
**95" RAIL APPROX WEIGHT 73 LBS.**



**RAIL SECTION**



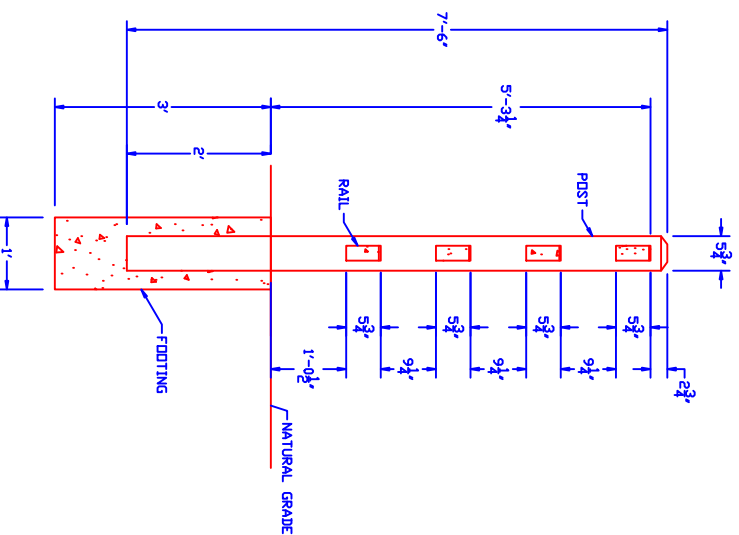
**90" POST - APPROX WEIGHT 171 LBS.**



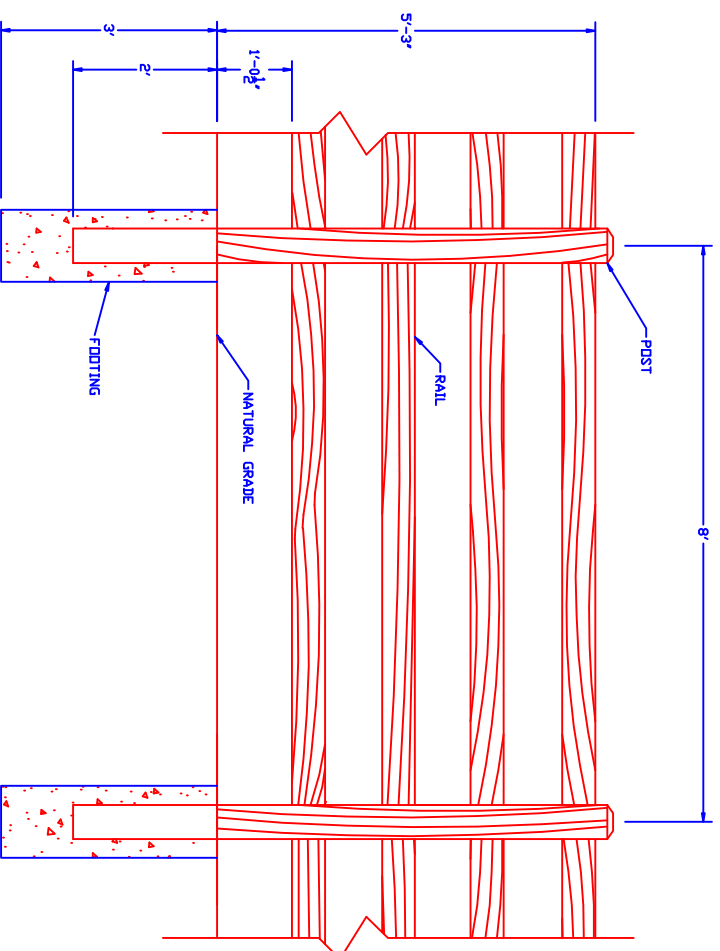
**FOOTING**

**NOTES:**

1. ALL CONCRETE TO BE MINIMUM COMPRESSIVE STRENGTH OF 4000 PSI AT 28 DAYS.
2. PRIMARY REINFORCEMENT TO BE ASLAN #3 SYNTHETIC REBAR REINFORCEMENT.
3. SECONDARY REINFORCEMENT TO BE MICROFIBER REINFORCEMENT.



**4 RAIL FENCE SECTION**



**4 RAIL 8 FT. SPACING FENCE ELEVATION**

# Phoenix Precast Products

4 RAIL FENCE - 8 FT. SPACING

Drawn By: E.S.

Date: 1.22.2014

Scale: 3/8" = 1'