

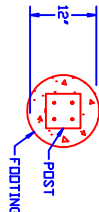
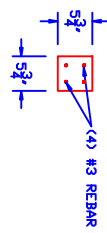
NOTES:

1. ALL CONCRETE TO BE MINIMUM COMPRESSIVE STRENGTH OF 4000 PSI AT 28 DAYS.

119" RAIL APPROX WEIGHT 93 LBS.

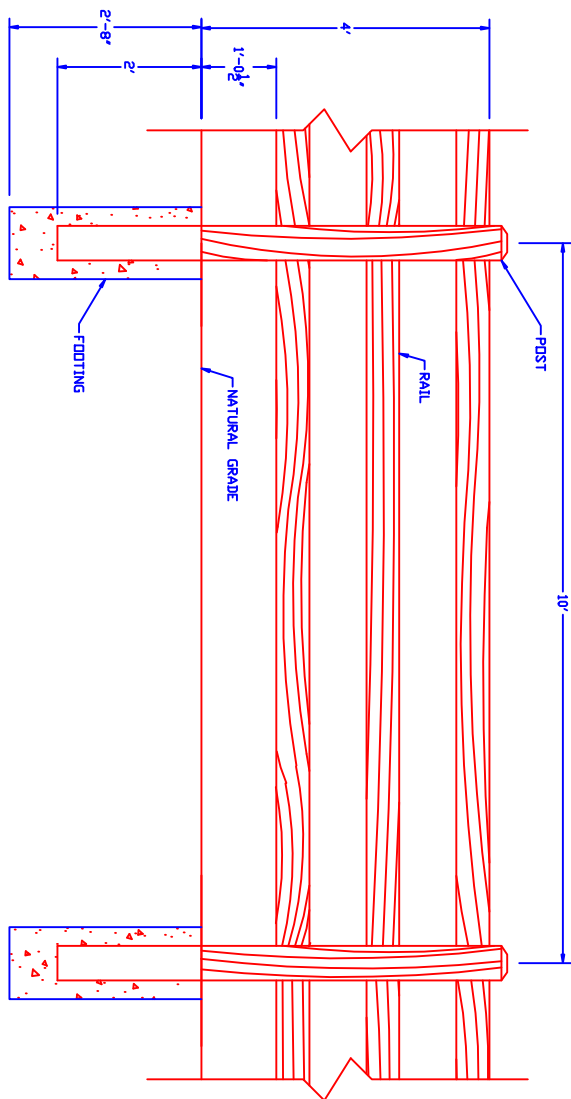
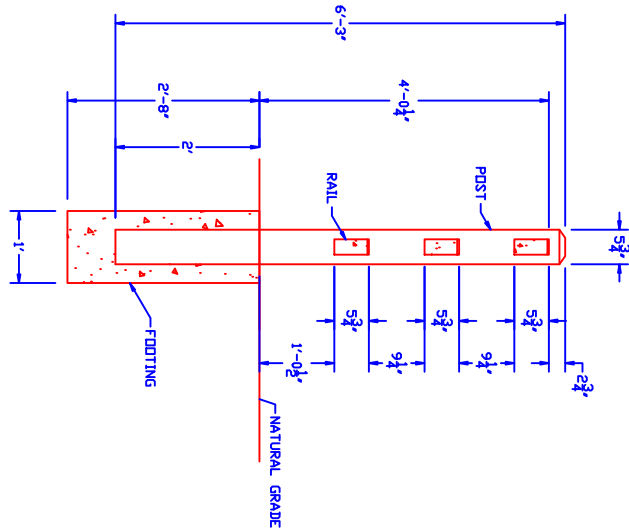
RAIL SECTION

2. PRIMARY REINFORCEMENT TO BE ASLAN #3 SYNTHETIC REBAR REINFORCEMENT.
3. SECONDARY REINFORCEMENT TO BE MICROFIBER REINFORCEMENT.



7 1/2" POST - APPROX WEIGHT 151 LBS.

FOOTING



3 RAIL FENCE SECTION

3 RAIL 10 FT. SPACING FENCE ELEVATION

Phoenix Precast Products

3 RAIL FENCE - 10 ft SPACING

Drawn By: E.S.

Date: 2.19.2014

Scale: 3/8" = 1'